

**GRIGGS**



T I M B E R   C O M P A N Y

**TIMBER & TIMBER  
ENGINEERED  
PRODUCTS**

# WHO ARE WE?

## Welcome to Griggs Timber Company...

Griggs Timber Company is a Gloucester based timber merchant offering a range of timber products and services including timber engineering, timber frame houses, kits, roof trusses and engineered I joist floor systems.

We have been trading since 1875 and with a wealth of knowledge and experience in the timber industry, our sales team are able to help our customers with their timber enquiries. We also offer a 'supply and erect service'.

Our in-house design centre is equipped to cater for all your timber engineering enquiries. We're a 'one stop shop' for timber and timber engineering.

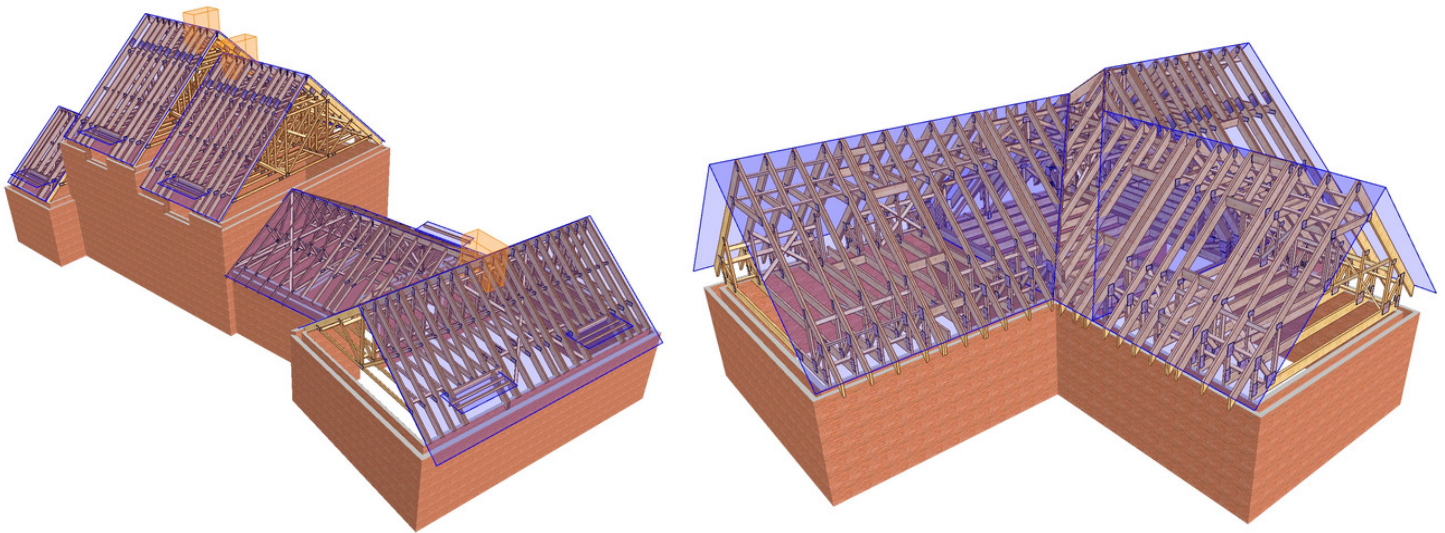


# DESIGN

## CAD design

Using CAD, our specialist team of designers provide a service that is the envy of our competitors, and are trained to produce full layouts, details and schedules to make the installation of your engineered system easy and hassle free.

Our I-Beams can be produced in a range of sizes which are suitable for both commercial and domestic applications. The high strength to low weight ratio of our beams make them easy for transporting and handling on site.



We offer bespoke solutions for roof, flooring and timber frame house designs. We can also offer advice on the best design for your project based on the level of performance that you specifically require for your roof or floor.

We can turn your project from feasibility to reality in a time scale to suit you. We also keep a stock of several joists sizes as well as all the necessary ancillary items such as metalwork and hangers.

All our engineered floors and roofs are delivered to your site as a complete structural package including trimmers, noggins, hangers, backer/filler blocks, restraint straps and temporary bracing.

We can even supply you with the weatherproof flooring at the same time; enabling you to complete the floor platform in the shortest time possible. Our schedule even tells you the correct hanger to attach to the joists!

# MACHINING & TREATMENT

## Machining

With our own large timber mill on site, we offer a full saw milling and machining service to our customers.

No order is too big or too small, and we can machine most profiles to order. Our knowledgeable sales staff will be happy to discuss your requirements with you – we are always happy to help! We're able to offer a fast and efficient service to re-saw/plane/mould softwood to your pattern.



## Treatment

Our busy treatment plant pressure treats timber with Protim E406. This is a tried and trusted method of preserving timber against fungal decay and insect attack for internal and external timbers in above ground applications. We also stock a range of tanalised timber which is ideal for external use and can be used in most applications.

## Priming

We offer a wood priming service to prepare your timber surface for a variety of coatings. Our priming services will seal the timber, preventing dust ingress and moisture penetration and provide a clean surface for the adhesion of your coatings. It also provides a barrier layer between your coating and the timber helping to prevent absorption of the surface coating directly into the material. Please contact the sales team for more information.

# ROOF TRUSSES

**Roof trusses are now used in around 95% of all buildings in the UK and Griggs Timber are specialists in the design and supply of all shapes & sizes. Call us for your free quotation now!**

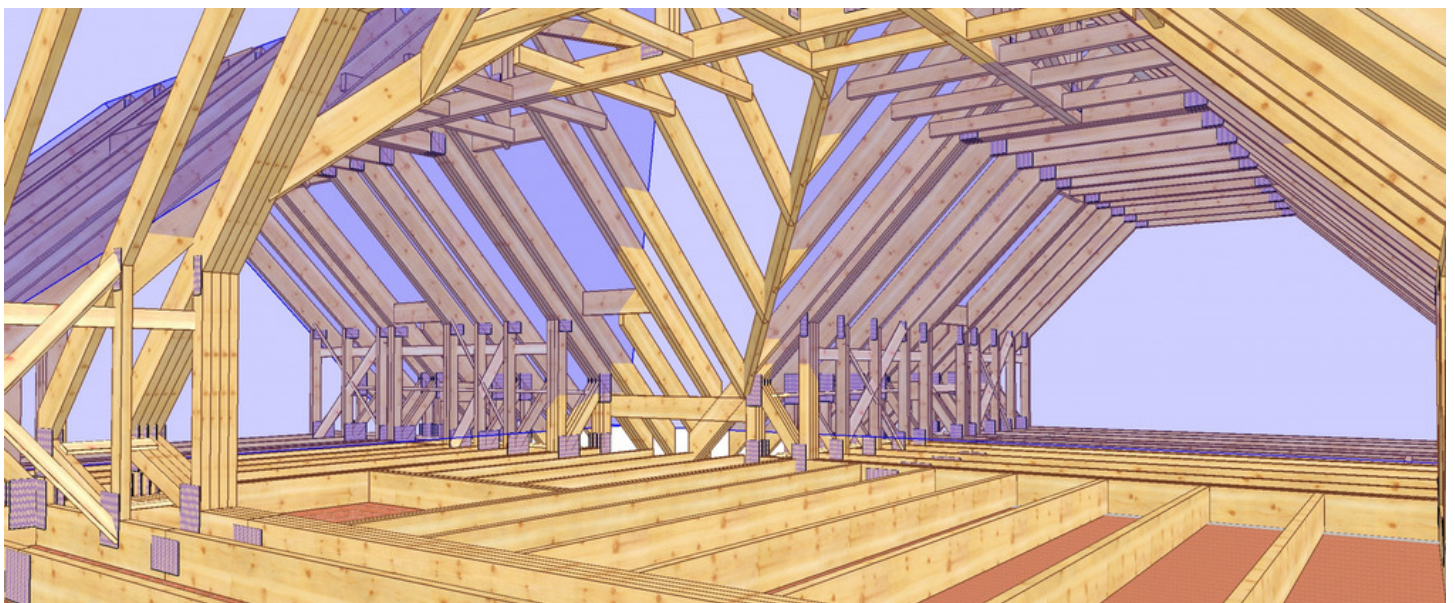
Our quotations detail exactly what will arrive on site. We offer a completely flexible package that can include roof trusses, engineered timber beams, loose structural timbers, temporary bracing, metalwork, hangers, wall plates, straps, fascias and soffits.

Using the latest CAD software, our team of designers turn an architect's vision in to a specifically designed engineered roof solution. We manufacture all profiles of trusses – from small porch mono trusses to 20m industrial and commercial trusses – all of which is covered by our own full professional indemnity insurance.

By sourcing your trusses from Griggs Timber, you get all these benefits:

- Offsite manufactured components – saving time on site
- Reduced costs – by buying prefabricated components, you save on labour costs on site
- Sustainable – full PEFC chain of custody. FSC® certification also available – please contact the sales team for more information
- Roof trusses that can span long distances negate the need for load bearing interior walls

As manufacturers of trusses, Griggs Timber attaches a CE mark to the products we produce. This is a declaration that our products comply with all relevant EU directives and is a mandatory requirement. It declares that our product meets minimum legal requirements of the relevant directive or regulations (which includes production and product quality assurance and internal production control), and allows the product to be placed legally on the market in any European member state.



# TIMBER FRAMES

We are large enough to ensure our service is to a high standard, with the manufacturing capabilities to produce any structure from a small extension to a block of flats. We are, however, still small enough to treat your project with the personal care and importance it deserves.

We welcome individual self-builders, local and national building companies and our quality never suffers.



Although we have a standard specification nothing is set in stone! We are completely adaptable and will support as much or as little of the structure as you require. We can provide a quote for both the structural and secondary packs.

Our structural pack normally consists of:

- Sole plates (complete with fixing angles and DPC)
- Timber engineered floor joists
- Chipboard decking
- Plasterboard and service noggins
- Spandrel panels
- Structural roof (including trusses, gable ladders and bracing)
- Fascia's
- Barge board
- Soffit plywood
- Stainless steel brickwork wall ties
- Joinery fixing batten
- Cavity closer

The second fix packs include:

- Internal door lining sets
- Windowboards
- Architrave and skirting
- Insulation
- Vapour barrier
- Fire stops
- Water storage tank stand
- Airing cupboard slats
- Roof access trap

# TIMBER FRAMES

As a manufacturer of trusses, timber frame and floor joists, Griggs Timber recognise the importance of being able to supply materials to their customers that are produced and certified under the ISO 9001 system. The main benefit of this is that our customers consistently receive high quality products and services, which in turn creates satisfied customers, management, and employees.

We have put in place a quality management system which is audited by a third party and use this to maintain a customer focus and to strive for continual improvement in the management of our processes.

Crucially, our ISO9001:2015 certification demonstrates our ability to consistently provide products and services that meet customer, statutory and regulatory requirements.

Specialist items such as external joinery, stairs and internal doors can be supplied if specifically requested, and we can even arrange for the erection of your structural frame – just supply your approved architectural planning drawings, and we'll take it from there!



# SPACE JOISTS

## Space joist metal open web floor solutions – saves both time and money!

- Long spans – longer spans are achievable in comparison to solid timber. This may eliminate the need for load bearing internal walls – and reduce the overall cost of a building
- Reduced wastage – pre-manufactured joists eliminate the need for on site alterations
- Flexible design – Spacejoist can be designed top hung to eliminate the rim board in timber frame construction, improving air tightness and reducing thermal bridging
- Acoustic performance – Spacejoist not only comfortably passes English & Welsh 40dB regulations, but it even complies with the more stringent 43dB Scottish regulations without additional insulation, plasterboard or resilient bars
- Fire performance – Space joist category C open web floor solution is approved by the Structural Timber Association in their product paper 4 as an acceptable option to achieve a fire robust solution during the construction process
- Easy handling – the lightweight Space joists can be moved on site without the need for crane hire
- Wide nailing surface – with a minimum chord width of 72mm, fixing floor and ceiling materials is quicker and easier
- Quality – being manufactured off site, the Space joist ensures consistency of quality and reliability
- Open Web design – fast and simple installation of services without the need for drilling or notching
- Attic bottom chords – Space joists can be incorporated into attic truss bottom chords and achieve greater spans, deeper insulation and provide a service void





# ENGINEERED JOISTS

Our I-Beam Joists are manufactured from high quality oriented strand board (OSB3) web, and flanges made from Kerto laminated veneer lumber (LVL). They have low and uniform moisture content, which avoids the splitting, warping and twisting so common with solid timber joists.

Being both lightweight and incredibly strong, the I-Beam joists are quick to install. Over time, they deliver less dimensional change due to their strength and rigidity which virtually eradicates floor movement and the problems associated with it.



# OTHER PRODUCTS

## We can also offer:

- Cladding – machined to any profile, in most timbers
- Hardwoods – sustainably sourced, and supplied either in sawn only boards or machined to your specification
- Western Red Cedar
- Siberian Larch
- Thermally modified timber
- Marine plywood
- Birch plywood
- Veneered boards
- Moisture resistant MDF & exterior MDF
- Flame retardant panels
- Tongue and grooved plywood

Our friendly and knowledgeable sales staff will be happy to discuss your requirements with you and offer impartial advice.





# CERTIFICATIONS





Certificate number: 11801  
 Issue number: 2017-01  
 Certificate start date: 30 August 2017  
 Certificate expiry date: 29 August 2022  
 Date of initial certification: 30 August 2017



## CERTIFICATE OF REGISTRATION

This is to certify that  
**Joseph Griggs & Co Limited/Also trading as Joseph Griggs & Co Ltd**  
 Bristol Road  
 Gloucester  
 Gloucestershire  
 GL1 5TD


has been audited and found to meet the requirements of standard  
**ISO 9001:2015 Quality Management System**

Scope of certification  
**Manufacture and supply of timber frame panels**




**Karen Prendergast**  
 Sector Director - Certification  
 Exova BM TRADA


Exova (UK) Ltd, (UK) Exova BM TRADA, Chilton House, Stocking Lane, High Wycombe, Buckinghamshire, HP14 4YS, UK  
 Registered Office: Exova (UK) Ltd, Larchwood Industrial Estate, Newbridge, Huddersfield HD9 9JL, United Kingdom, Reg No. 3027967.  
 This certificate remains the property of Exova (UK) Ltd. This certificate and all copies or reproductions of the certificate shall be returned to Exova (UK) Ltd or destroyed if requested. Further confirmation regarding the scope of this certificate and verification of the certificate is available through Exova BM TRADA or at the above address or at [www.exovabmtrada.com](http://www.exovabmtrada.com).  
 The use of the UKAS accreditation mark indicates accreditation in respect of those activities covered by the accreditation certification (UKAS) clients. The scope of certification shown above includes the participating client shown in approval 8.



This is to certify that  
**Joseph Griggs & Co Limited**  
 is a Timber Industry Member of TRADA  
 for the 12 month period ending  
**31st December 2018**



**Chief Executive**



Timber Research and Development Association





Certificate number: BMT-PEFC-0348  
 Issue number: 2017-01  
 Certificate start date: 30 April 2017  
 Certificate expiry date: 29 April 2022  
 Date of initial certification: 30 April 2017



## CERTIFICATE OF REGISTRATION

This is to certify that  
**Joseph Griggs & Co Limited/ Also trading as Joseph Griggs & Co Ltd**  
 Bristol Road  
 Gloucester  
 Gloucestershire  
 GL1 5TD

has been audited and found to meet the requirements of standard PEFC ST  
**2002:2013 Chain of Custody Certification**  
 As amended - [www.pefc.org](http://www.pefc.org)

Scope of certification  
 The purchase, storage, processing, sale, and distribution of PEFC certified timber and timber products and the manufacture of PEFC certified engineered roofing systems, engineered flooring systems, and timber-frame structures (some of these activities provided by outsourcing).

Products:  
 Timber products  
 FSC certified engineered roofing systems  
 engineered flooring systems  
 timber-frame structures

Raw material origin:  
 Certified Raw Material

Method:  
 Percentage: Physical Separation




**Karen Prendergast**  
 Sector Director - Certification  
 Exova BM TRADA

Exova (UK) Ltd, (UK) Exova BM TRADA, Chilton House, Stocking Lane, High Wycombe, Buckinghamshire, HP14 4YS, UK  
 Registered Office: Exova (UK) Ltd, Larchwood Industrial Estate, Newbridge, Huddersfield HD9 9JL, United Kingdom, Reg No. 3027967.  
 This certificate remains the property of Exova (UK) Ltd. This certificate and all copies or reproductions of the certificate shall be returned to Exova (UK) Ltd or destroyed if requested. Further confirmation regarding the scope of this certificate and verification of the certificate is available through Exova BM TRADA or at the above address or at [www.exovabmtrada.com](http://www.exovabmtrada.com).  
 This certificate itself does not constitute evidence that a particular product supplied by the certificate holder is PEFC certified. Products offered, shipped or sold by the certificate holder can only be considered to be covered by the scope of this certificate when the required PEFC Chain of Custody and other documentation is provided.  
 The use of the UKAS accreditation mark indicates accreditation in respect of those activities covered by the accreditation certification (UKAS) clients.

1 (3)

## DECLARATION OF PERFORMANCE

NO. MW/LVL/312-001/CPR/DOP



- PRODUCT-TYPE:**  
Kerto-Q  
Structural Laminated Veneer Lumber
- TYPE, BATCH OR SERIAL NUMBER OR OTHER IDENTIFICATION:**  
Kerto-Q  
Structural Laminated Veneer Lumber
- INTENDED USE OR USES:**  
Buildings and bridges
- NAME AND ADDRESS OF THE MANUFACTURER:**  
Metsäliitto Cooperative  
Metsä Wood  
P.O.Box 24  
FI-08101 Lohja, Finland  
Tel. +358 10 4058 499  
[www.metsawood.com](http://www.metsawood.com)
- SYSTEM OF ASSESSMENT AND VERIFICATION OF CONSTANCY OF PERFORMANCE:**  
AVCP System 1
- CONSTRUCTION PRODUCT COVERED BY A HARMONISED STANDARD:**  
VTT Expert Services Ltd, Notified product certification body No. 0609 performed determination of the product type on the basis of type testing (including sampling), type calculation, tabulated values or descriptive documentation of the product; initial inspection of the manufacturing plants and of factory production control and performs the continuous surveillance, assessment and evaluation of factory production control under system 1 and issued the certificate of constancy of performance.  
0809 – CPR – 1002

# CERTIFICATIONS

## DECLARATION OF PERFORMANCE

NO. MWUK/FJI/321-001/CPR/DOP



### 1. PRODUCT-TYPE:

- Finjoist I-joist  
 - Light composite wood-based beam  
 - The flanges are made of LVL and the web of OSB board

### 2. TYPE, BATCH OR SERIAL NUMBER OR OTHER IDENTIFICATION:

- Finjoist I-joist  
 - Light composite wood-based beam  
 - The flanges are made of LVL and the web of OSB board

### 3. INTENDED USE OR USES:

- Load bearing part of building constructions

### 4. NAME AND ADDRESS OF THE MANUFACTURER:

Metsäliitto Cooperative  
 Metsä Wood  
 King's Lynn Site  
 Cross Bank Road  
 King's Lynn, Norfolk PE30 2HD  
 United Kingdom  
 Tel: +44 (0) 1553 732 900  
[www.metsawood.com](http://www.metsawood.com)

### 6. SYSTEM OF ASSESSMENT AND VERIFICATION OF CONSTANCY OF PERFORMANCE:

AVCP System 1

### 8. CONSTRUCTION PRODUCT FOR WHICH A EUROPEAN TECHNICAL ASSESSMENT HAS BEEN ISSUED:

VTT Expert Services Oy, Notified body No. 0809 issued ETA-02/0026 (revised 11.06.2013) on the basis of Guideline Nr 011 for European Technical Approval. BM TRADA, Notified body No. 1224 performed determination of the product type on the basis of type testing (including sampling), type calculation, tabulated values or descriptive documentation of the product; initial inspection of the manufacturing plants and of factory production control and performs the continuous surveillance, assessment and evaluation of factory production control under system 1 and issued the certificate of constancy of performance:

1224 - CPR - 0001



EN

## DECLARATION OF PERFORMANCE

NO. MW/LVL/311-001/CPR/DOP



### 1. PRODUCT-TYPE:

Kerto-S  
 Structural Laminated Veneer Lumber

### 2. TYPE, BATCH OR SERIAL NUMBER OR OTHER IDENTIFICATION:

Kerto-S  
 Structural Laminated Veneer Lumber

### 3. INTENDED USE OR USES:

Buildings and bridges

### 4. NAME AND ADDRESS OF THE MANUFACTURER:

Metsäliitto Cooperative  
 Metsä Wood  
 P.O.Box 24  
 FI-08101 Lohja, Finland  
 Tel. +358 10 4656 499  
[www.metsawood.com](http://www.metsawood.com)

### 6. SYSTEM OF ASSESSMENT AND VERIFICATION OF CONSTANCY OF PERFORMANCE:

AVCP System 1

### 7. CONSTRUCTION PRODUCT COVERED BY A HARMONISED STANDARD:

VTT Expert Services Ltd, Notified product certification body No. 0809 performed determination of the product type on the basis of type testing (including sampling), type calculation, tabulated values or descriptive documentation of the product; initial inspection of the manufacturing plants and of factory production control and performs the continuous surveillance, assessment and evaluation of factory production control under system 1 and issued the certificate of constancy of performance:

0809 - CPR - 1002



EN

### CERTIFICATE OF CONFORMITY OF THE FACTORY PRODUCTION CONTROL

Notified Body No. 1224  
 In compliance with Regulation 305/2011/EU of the European Parliament and of the Council of 9 March 2011 (the Construction Products Regulation or CPR), this certificate applies to the construction product  
 Visual Strength Graded Timber in accordance with EN 14081

Grading Rule/s applied: BS 4978  
 Species or Species Group: WPPA  
 Strength Class/es: WPPA: C16, C24  
 Grades: G5, S5  
 Dry and Wet Graded Timber

produced by or for  
 Joseph Griggs & Co Limited/Also trading as Joseph Griggs & Co Ltd  
 Bristol Road  
 Gloucester  
 Gloucestershire  
 GL1 3TD

and produced in the manufacturing plant(s)  
 Joseph Griggs & Co Limited/Also trading as Joseph Griggs & Co Ltd  
 Bristol Road, Gloucester, Gloucestershire, GL1 3TD

This certificate attests that all provisions concerning the assessment and verification of constancy of performance described in Annex ZA of the standard(s)  
**BS EN 14081 Strength Graded Timber**  
 under system 2+ are applied and that  
 the factory production control fulfils all the prescribed requirements set out above.

This certificate was first issued on 17 March 2016 and will remain valid until the date of expiry shown, provided that the test methods and/or factory production control requirements included in the harmonised standard, used to assess the performance of the declared characteristics, do not change, and the product, and the manufacturing conditions in the plant are not modified significantly.

**Tom Johnston**  
 General Manager  
 Central Certification Services

Exova BSI Ltd, 17ix Exova the VMEs, Children Road, Stockley Lane, High Wycombe, Buckinghamshire, MK12 0BQ, UK  
 Registered Office: Exova BSI Ltd, Locked Ironbridge Station, Shropshire, Shropshire SY20 9PA, United Kingdom. Reg No. 32270421  
 This certificate remains the property of Exova BSI Ltd. The certificate and all copies or reproductions of the certificate shall be returned to Exova BSI Ltd on termination of agreement. Further notification regarding the status of this certificate and any modification of the certificate is available through Exova the VMEs or at the above address or at [www.exovabsl.com](http://www.exovabsl.com)

Certificate Number  
 1224-CPR-0991

Date of Initial Certification  
 17 March 2016

Date of Last Issue  
 21 March 2016

Date of Expiry  
 16 March 2019

VTT EXPERT SERVICES OY  
 PL 1001  
 02044 VTT  
 Tel. + 358 20 722 111  
[www.vttexpertservices.fi](http://www.vttexpertservices.fi)



Rakennusalan tuotteita koskevan jäsenvaltioiden lainsäädännön lähentämisestä 21 päivänä joulukuuta 1988 annetun neuvoston direktiivin 89/106/EEC mukaisesti ilmoitettu tuotehyväksyntätoimisto

EOTAN JÄSEN

### Eurooppalainen tekninen hyväksyntä ETA - 02/0026 European Technical Approval

#### Kauppanimi:

Trade name

Finjoist I-joist, FJI

#### Hyväksynnän haltija:

Holder of approval:

Metsäliitto Cooperative  
 Metsä Wood, Building Products  
 P.O. Box 50  
 FI-02020 Metsä  
 Finland

#### Tuotetyppi ja sen käyttöarkeutus:

Generic type and use of construction product.

Puuvaihteinen yhdistelmäpalkki rakenteelliseen käyttöön  
 Light composite wood-based beam for structural purposes

#### Voimassaoloaika: Validity from/to

This version replaces: Tämä korvaa

From June 11, 2013 to June 11, 2018  
 ETA 02/0026 valid from November 16, 2012 to August 30, 2013

#### Valmistuspaikka:

Manufacturing plants:

UK Kings Lynn  
 Cross Bank Road  
 Kings Lynn, Norfolk PE30 2HD

#### Tämä hyväksyntä sisältää

This European Technical Approval contains

sivuja/liitteitä

pages/annexes

20 sivua sisältäen 3 liitettä

20 pages including 3 Annexes



Eurooppalainen tekninen hyväksyntäorganisaatio  
 European Organisation for Technical Approvals



T I M B E R   C O M P A N Y

Griggs Timber Company  
Bristol Road  
Gloucester  
GL1 5TD  
Telephone: 01452 520346  
Fax: 01452 300751  
Email: [sales@josephgriggs.com](mailto:sales@josephgriggs.com)  
[www.griggstimber.co.uk](http://www.griggstimber.co.uk)



The mark of  
responsible forestry

